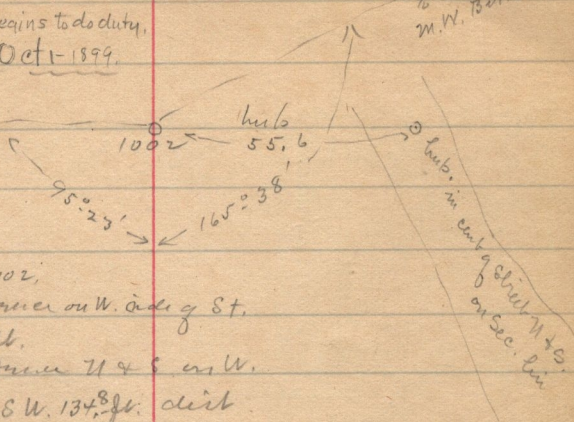


WASHINGTON JENKINS CIV. ENG.

at this point the Canal begins to do duty,  
ended here - 1 P.M. Oct 1 - 1899.

to N. Cherry on

Isaac Blair's house.



to N. End of  
M.W. Butler Dam

From hub. at Sta 1002,  
 Blazed post. in fence on W. side of St.  
 bears N 11° 10.2' E.  
 Blazed post. in fence N 4° 5' on W.  
 side of St. bears S 11° 13.8' E. dist.

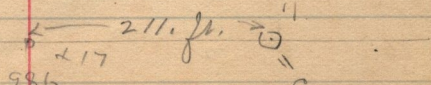
U.S. Pat. to Ad. Geo. Sandberg

Lots 1 & 2, of Sec 34, containing 25.13 a

another Pat. to Sandberg

W 1/2 of SW 1/4 and N E 1/4 of S.W. 1/4 of  
 of Sec 34. T. 15, N. R. 1, W. cont. 145.38 a  
 (not recorded)

line follows Q.S.T. bench



Blown  
 marked  
 84  
 37 inches on W

Salt Leds. Mar.

on N. side of T. 14 N. R. 1 W

cont. Sec 5

3-4-33-34